

**E P A R T M E N T O F T H E A R M Y T E C H N I C A L M A N U A L**

---

**ORGANIZATIONAL MAINTENANCE REPAIR PARTS  
AND SPECIAL TOOLS LISTS  
INTERCOMMUNICATING STATIONS LS-128/FI,  
LS-128A/FI, AND LS-128B/FI  
FSN 5830-162-8170**

---

**Headquarters, Department of the Army, Washington, D.C.  
13 December 1974**

---

*Current as of 19 September 1974*

	Paragraph	Page
SECTION I. INTRODUCTION		
Scope . . . . .	1-1	2
General . . . . .	1-2	2
Explanation of columns . . . . .	1-3	2
Special information . . . . .	1-4	4
Location of repair parts . . . . .	1-5	4
Abbreviations (not applicable) . . . . .	1-6	4
Reporting of equipment publication improvements . . . . .	1-7	4
II. PRESCRIBED LOAD ALLOWANCES (not applicable)		
III. REPAIR PARTS LIST . . . . .		6
IV. SPECIAL EQUIPMENT (not applicable)		
V. INDEX--FEDERAL STOCK NUMBER AND REFERENCE NUMBER CROSS- REFERENCE TO FIGURE AND ITEM NUMBER . . . . .		7

SECTION I  
INTRODUCTION

1-1. Scope

This manual lists repair parts and special tools required for the performance of organizational maintenance of the LS-128/FI, LS-128A/FI, and LS-128B/FI. The PCCN for the equipment is GCWAPB for all models.

1-2. General

This repair parts and special tools list is divided into the following sections:

a. *Prescribed Load Allowance (PLA) - Section II.* Not applicable.

b. *Repair Parts List - Section III.* A list of repair parts authorized for the performance of maintenance at the organizational level. This repair parts list is arranged in alphabetical order.

c. *Special Tools, Test and Support Equipment - Section IV.* Not applicable.

d. *Index - Federal Stock Number and Reference Number Cross-Reference to Figure and Item Number - Section V.* A list, in ascending numerical sequence, of all Federal stock numbers appearing in the listings, followed by a list, in alphanumeric sequence, of all reference numbers appearing in the listings. Federal stock number and reference numbers are cross-referenced to each illustration figure and item number or reference designation appearance.

1-3. Explanation of Columns

The following provides an explanation of columns in the tabular lists-

a. *Source, Maintenance, and Recoverability Codes (SMR).*

(1) Source code. Indicates the manner of acquiring support items for maintenance, repair, or overhaul of end items. Source codes are -

code	<i>Explanation</i>
PA - -	Item procured and stocked for anticipated or known usage.
PB -	Item procured and stocked for insurance purposes because essentiality dictates that a minimum quantity be available in the supply systems.
PC -	Item procured and stocked and which otherwise would be coded PA except that it is deteriorative in nature.
PD -	Support item, excluding support equipment, procured for initial issue or outfitting and stocked only for subsequent or additional initial issues or outfittings. Not subject to automatic replenishment.

<i>Code</i>	<i>Explanation</i>
PE -	Support equipment procured and stocked for initial issue or outfitting to specified maintenance repair activities.
PF -	Support equipment which will not be stocked but which will be centrally procured on demand
PG -	Item procured and stocked to provide for sustained support for the life of the equipment. It is applied to an item peculiar to the equipment which because of probable discontinuance or shutdown of production facilities would prove uneconomical to reproduce at a later time.
KD -	An item of depot overhaul/repair kit and not purchased separately. Depot kit defined as a kit that provides items required at the time of overhaul or repair.
KF -	An item of a maintenance kit and not purchased separately. Maintenance kit defined as a kit that provides an item that can be replaced at organizational or direct support or general support levels of maintenance.
KB -	item included in both a depot overhaul/repair kit and a maintenance kit.
MO -	item to be manufactured or fabricated at organizational level.
MF -	Item to be manufactured or fabricated at direct support maintenance level.
MH -	Item to be manufactured or fabricated at general support maintenance level.
MD -	Item to be manufactured or fabricated at depot maintenance level.
AO -	Item to be assembled at organizational level.
AF -	Item to be assembled at direct support maintenance level.
AH -	Item to be assembled at general support maintenance level.
AD -	Item to be assembled at depot maintenance level.
XA -	Item is not procured or stocked because the requirements for the item will result in the replacement of the next higher assembly.
XB -	Item is not procured or stocked. If not available through salvage, requisition.
XC -	Installation drawing, diagram instruction sheet, field service drawing, that is identified by manufacturers' part number.
XD -	Support items can be requisitioned with justification.

**NOTE**

Cannibalization or salvage may be used as a source of supply for any items source coded above except those coded XA and aircraft support items as restricted by AR 700-42.

(2) *Maintenance code.* Maintenance codes are assigned to indicate the levels of maintenance authorized to USE and REPAIR support items. The maintenance codes are entered in the third and fourth positions of the Uniform SMR Code Format as follows —

(a) *Use (third position).* The maintenance code entered in the third position indicates the lowest maintenance level authorized to remove, replace, and use the support item. The maintenance code entered in the third position indicates one of the following levels of maintenance.

Code	Application/Explanation
D —	Support item is removed, replaced, used at the organizational level of maintenance.

**NOTE**

A code "C" may be used in this position to denote crew or operator maintenance performed within organizational maintenance.

F —	Support item is removed, replaced, used at the direct support maintenance level.
H —	Support item is removed, replaced, used at the general support maintenance.
D —	Support items that are removed, replaced, used at depot only.

(b) *Repair (fourth position).* The maintenance code entered in the fourth position indicates whether the item is to be repaired and identifies the lowest maintenance level with the capability to perform complete repair (i.e., all authorized maintenance functions). When a maintenance code is not used a dash (-) sign is entered. For multi-service equipment/systems or when a code is entered, this position will contain one of the following maintenance codes as assigned by the service(s) that require the code —

Code	Application/Explanation
D —	The lowest maintenance level capable of complete repair of the support item is the organizational level.
F —	The lowest maintenance level capable of complete repair of the support item is direct support.
H —	The lowest maintenance level capable of complete repair of the support item is general support.
D —	The lowest maintenance level capable of complete repair of the support item is the depot level.

Code	Application/Explanation
L —	Repair restricted to designated Specialized Repair Activity.
Z —	Non-repairable. No repair is authorized.
B —	No repair is authorized. The item may be reconditioned by adjusting, lubricating, etc., at the user level. No parts or special tools are procured for the maintenance of this item.

(3) *Recoverability code.* Recoverability codes are assigned to support items to indicate the disposition action on unserviceable items. The recoverability code is entered in the fifth position of the uniform SMR Code Format as follows —

Code	Explanation
Z —	Nonrepairable item. When unserviceable, condemn and dispose at the level indicated in the first digit of the maintenance code.
O —	Repairable item. When uneconomically repairable, condemn and dispose at organizational level.
F —	Repairable item. When uneconomically repairable, condemn and dispose at the direct support level.
H —	Repairable item. When uneconomically repairable, condemn and dispose at the general support level.
D —	Repairable item. When beyond lower level repair capability, return to depot. Condemnation and disposal not authorized below depot level.
L —	Repairable item. Repair, condemnation and disposal not authorized below depot/Specialized Repair Activity level.
A —	Item requires special handling or condemnation procedures because of specific reasons (i.e., precious metal content, high dollar value, critical material or hazardous material).

b. *Federal Stock Number.* Indicates the Federal stock number assigned to the item.

**NOTE**

For requisitioning purposes, the Federal stock number must be converted to the National stock number by "-00-" after the Federal stock classification (FSC) code (first four digits). For example, FSN 6625-553-0142 converts to NSN 0625-00-553-0142.

c. *Description.* Indicates the Federal item name and a minimum description required to identify the item. The last line indicates the reference number follow@ by the applicable Federal Supply Code for Manufacturer (FSCM) in parentheses. The FSCM is

used as an element in item identification to designate manufacturer or distributor or Government agency, etc., and is identified in SB 708-42.

**d. Unit of Measure (U/M).** Indicates the standard or basic quantity by which the listed item is used in performing the actual maintenance function. This measure is expressed by a two-character alphabetical abbreviation; e.g., ea, in, pr, etc., and is the basis used to indicate quantities and allowances in subsequent columns. When the unit of measure differs from the unit of issue, the lowest unit of issue that will satisfy the required units of measure will be requisitioned.

**e. Quantity Incorporated in Unit.** This column indicates the quantity of the item used in the equipment. Subsequent appearances of the same item in the same assembly are indicated by the letters "RFF".

**f. 15-Day Organizational Maintenance Allowance.**

(1) The repair parts indicated by an asterisk in the allowance column represent those authorized for use at the organizational category, and will be requisitioned on an "as required" basis, until stockage is based on demand in accordance with AR 710-2.

(2) Major Army commanders are authorized to approve reduction in the range of support items authorized for use in units within their commands. Recommendations for increase in range of items authorized for use will be forwarded to Commander, US Army Electronics Command, ATTN: AMSEL-MA-CW, Fort Monmouth, N.J., 07703. Any changes approved will be reflected in a revision to the RPSTL.

(3) Allowance quantities are indicated in the special tools list section for special tools, TMDE, and other equipment.

**g. Illustration.** This column is divided as follows:

(1) **Figure number.** Indicates the figure number of the illustration on which the item is shown in TM 11-2572A.

(2) **Item number.** Indicates the item number or reference designation used to reference the item in the illustration.

#### 1-4. Special Information

**a.** Usable on codes are included in column 3. Uncoded items are applicable to all models. Identification of the usable on codes used in this publication

Code	Used on
BZ3	LS-128/FI
BZ4	LS-128A/FI
BZ5	LS-128B/FI

**b.** The following publication pertains to the equipment and its components:

TM 11-2572A

Intercommunicating Stations LS-124B/FI, LS-124C/FI, LS-125A/FI, LS-126A/FI, LS-127A/FI, LS-128A/FI, and LS-128B/FI.

#### 1-5. Location of Repair Parts

**a.** This manual contains one cross-reference index (sec V) to be used to locate a repair part when either the Federal stock number or reference number (manufacturer's part number) is known. The first column in the index is prepared in numerical or alphanumeric sequence in ascending order. The reference numbers (manufacturer's part numbers) are listed immediately following the last listed Federal stock number in the index of Federal stock numbers.

**b.** When the Federal stock number or reference number is known, follow the procedures given in (1) and (2) below.

(1) Refer to the index of Federal stock numbers (sec V) and locate the Federal stock number or reference number. The FSN and reference number are cross-referenced to the applicable figure and item number or reference designation.

(2) Refer to the repair parts list (sec III) and locate the figure number (col 7a) and item number or reference designation (col 7b) as noted in the FSN index.

**c.** When the figure and item number or reference designation are known, scrutinize columns 7a and 7b of the repair parts list (sec III) until the item is located.

**d.** When the FSN, reference number, figure number, item number and reference designation are not known, scrutinize column 3 of the repair parts list (sec III), which is arranged in alphabetical order.

#### 1-6. Abbreviations

Not applicable.

#### 1-7. Reporting of Equipment Publication Improvements

The reporting of errors, omissions, and recommendations for improving this publication by the individual user is encouraged. Reports should be submitted on DA Form 2028 (Recommended Changes to Publications and Blank Forms) and forwarded direct to Commander, US Army Electronics Command, ATTN: AMSEL-MA-CW, Fort Monmouth, NJ 07703.

(Next printed page is 6.)

(1) SMR CODE	(2) FEDERAL STOCK NUMBER	(3) DESCRIPTION REFERENCE NUMBER & MFR CODE	(4) UNIT OF MEAS	(5) QTY INC IN UNIT	(6) 15-DAY ORGANIZATIONAL MAINTENANCE ALLOW						(7) CLASSIFICATION	
					(a)	(b)	(c)	(d)	(e)	(f)	(g)	(h)
					1-5	6-25	26-50	51-100	101-250	251-500	501-1000	1000+
PA0ZZ	5999-244-3150	CAP. ELECTRICAL NO-REF-DESIG FOR FUSEHOLDER... 4435FL-2 (71400)	EA	1	*	*	*	*				
PA0ZZ	5900-262-0210	ELECTRON TUBE V3..... 2Y3WGT (81349)	EA	1	*	*	*	*	40	V3		
PA0ZZ	5900-171-3710	ELECTRON TUBE V1..... 6AU6NC (81345)	EA	1	*	*	*	*	30	V1		
PA0ZZ	5900-252-4320	ELECTRON TUBE V2..... 6F6GT (81349)	EA	1	*	*	*	*		V2		
PA0ZZ	5900-100-5250	ELECTRON TUBE V1..... 6J7GT (81349)	EA	1	*	*	*	*		V1		
PA0ZZ	5900-410-9927	ELECTRON TUBE V2..... 6X4WA (81349)	EA	1	*	*	*	*	20	V2		
PA0ZZ	5900-272-9102	ELECTRON TUBE V3..... 6X4WA (81349)	EA	1	*	*	*	*	30	V3		
PA0ZZ	5900-430-0920	ELECTRON TUBE V3..... 6X5WGT (81349)	EA	1	*	*	*	*	20	V3		
PA0ZZ	5900-434-0073	ELECTRON TUBE V3..... 6005M (81349)	EA	1	*	*	*	*	30	V3		
PA0ZZ	5920-280-4405	FUSE, CARTRIDGE F1 1 AMP, 250V..... FJ24250VLAS (81349)	EA	1	*	*	*	*	20	F1		
PA0ZZ	3355-160-6050	KNOB NO-REF-DESIG SET SCREW TYPE VOLUME..... CONTROL SCREW 7852 (80063)	EA	1	*	*	*	*				
PA0ZZ	3355-044-7103	KNOB NO-REF-DESIG SET SCREW TYPE TALK-LISTEN... SW	EA	1	*	*	*	*				
PA0ZZ	0240-057-2007	LAMP LM-27 E1 0-8V, 0.25 AMP..... LM27 (80058)	EA	1	*	*	*	*		E1		
PA0ZZ	0240-155-8706	LAMP LM-32 E2 0.15 AMP..... LM32 (80050)	EA	1	*	*	*	*	40	E2		
PA0ZZ	0240-155-8706	LAMP LM-32 E1 0.15 AMP..... LM32 (80050)	EA	1	*	*	*	*	40	E1		
PA0ZZ	0210-299-3078	LENS, INDICATOR LIGHT J1 RED..... 10010-421 (72019)	EA	1	*	*	*	*	30	J1		
PA0ZZ	0210-270-4097	LENS, INDICATOR LIGHT J1 RED..... 42 (20902)	EA	1	*	*	*	*		J1		
X00ZZ		SHIELD, ELECTRON TUBE NO-REF-DESIG..... TS102U02 (81350)	EA	1	*	*	*	*				
X00ZZ		SHIELD, ELECTRON TUBE E5..... TS102U03 (81350)	EA	2	*	*	*	*		E5		
X00ZZ		SHIELD, ELECTRON TUBE E6..... TS102U03 (81350)	EA	REF	*	*	*	*		E6		

INDEX - FEDERAL STOCK NUMBER AND REFERENCE NUMBER  
CROSS-REFERENCE TO FIGURE AND ITEM NUMBER

STOCK NUMBER	FIGURE NO.	ITEM NO.	STOCK NUMBER	FIGURE NO.	ITEM NO.
5955-100-6650					
5955-049-2103			5900-72-9107	30	V3
5920-207-4402	28	F1			
5940-100-5208	28	V1			
5940-116-3927	28	V2	5999-244-5150		
5940-134-0973	30	V3	0210-270-4097		J1
5940-179-2710	30	V1	0210-299-3078	31	J1
5940-188-0920	28	V3	0240-357-2887		E1
			0240-155-8706	40	E2
5940-262-0218	41	V3	0240-155-8706	41	E1
5940-262-1226		V2			

REFERENCE NO.	MFR CODE	FIG. NO.	ITEM NO.	REFERENCE NO.	MFR CODE	FIG. NO.	ITEM NO.
F02A250V1A5	01349	28	F1	5Y2WGT	01349	41	V3
LM27	01058		E1	0AUGWC	01349	30	V1
LM52	01058	43	E2	0FeGT	01349		V2
LM52	01058	41	E1	0J7GT	01349		V1
SC0107052	01350			05J7	01349	28	V1
TS102002	01350			0V0GT	01349	28	V2
TS102003	01350		E5	0K4WA	01349	30	V3
TS102003	01350		E6	0A5WGT	01349	28	V3
10010-431	72512	31	J1	0J05W	01349	30	V3
2110M	72512			9435F1-2	71400		
22	00992		J1				

**By Order of the Secretary of the Army:**

**FRED C. WEYAND**  
*General, United States Army*  
*Chief of Staff*

**Official:**

**VERNE L. BOWERS**  
*Major General, United States Army*  
*The Adjutant General*

**Distribution:**

*Active Army:*

USASA (2)  
CNGB (1)  
Dir Trans (1)  
COE (1)  
TSG (1)  
USAARENBD (1)  
USAMB (5)  
AMC (1)  
TRADOC (2)  
ARADCOM (2)  
ARADCOM Rgn (2)  
OS Maj Comd (4)  
LOGCOMLS (3)  
MICOM (2)  
TECOM (2)  
DCA (1)  
YFG (2)  
USARSO (2)  
USATC Inf (2)  
BAMC (2)  
USACC (4)  
MDW (1)  
Armies (2)  
Corps (2)  
HISA (Ft Monmouth) (18)  
Sve Colleges (1)  
USASESS (5)  
USAADS (2)  
USAFAS (2)  
USAARMS (2)  
USAIS (2)

NF: None

USAR: None

For **explanation** of abbreviations used, see AR 310-50.

USAES (2)  
USAINTC (3)  
WRAMC (1)  
ATS (1)  
Ft Gordon (10)  
Ft Huachuca (10)  
WSMR (1)  
Ft Carson (5)  
Ft Richardson (ECOM Ofc) (2)  
Army Dep (1) except  
LBAD (14)  
SAAD (30)  
TOAD (14)  
ATAD (10)  
USA Dep (2)  
Sig Sec USA Dep (2)  
Sig Dep (2)  
Sig FLDMS (1)  
USAERDAA (1)  
USAERDAW (1)  
MAAG (1)  
USARMIS (1)  
Unit org under fol TOE:  
(1 copy each unit)  
11-16  
11-97  
11-98  
11-117  
11-500 (AA-AC)

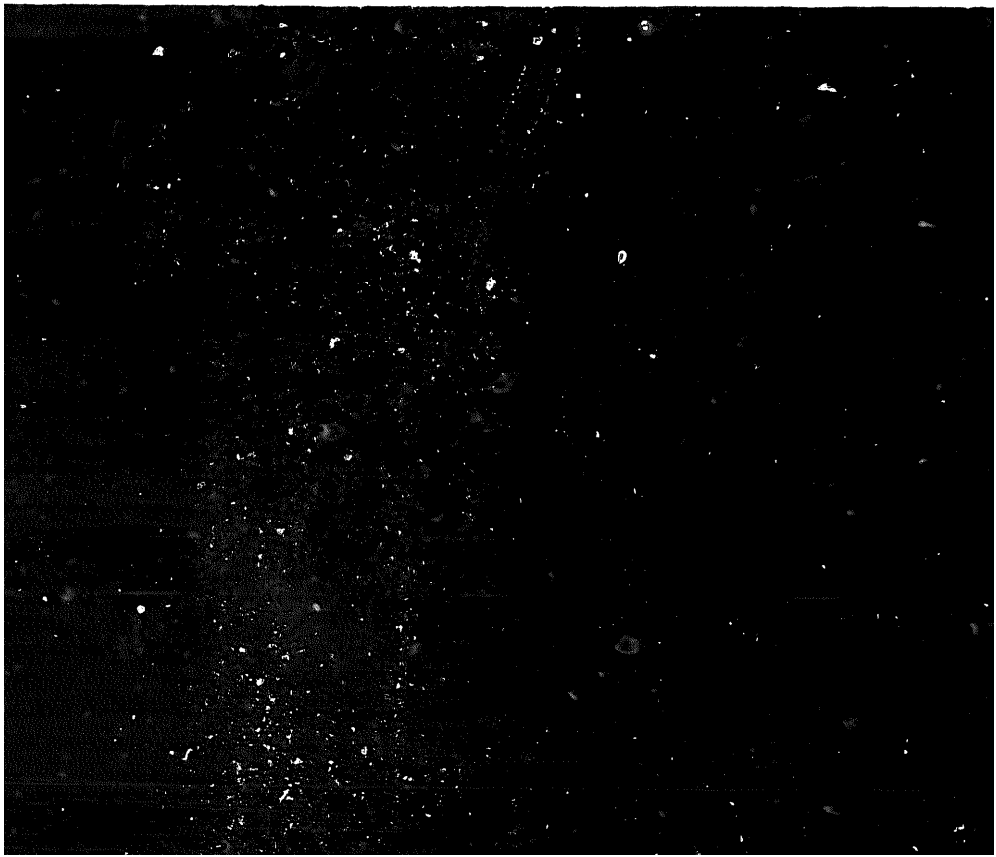
**END**

**11-26-82**

**DATE**

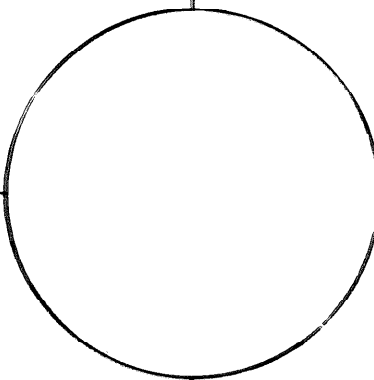
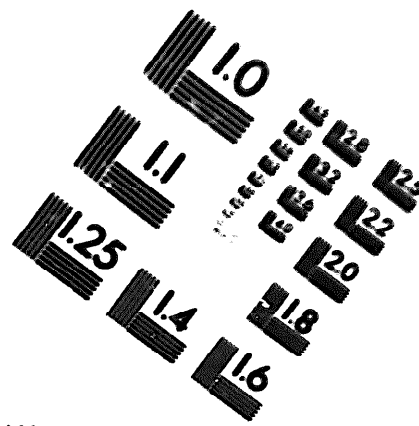
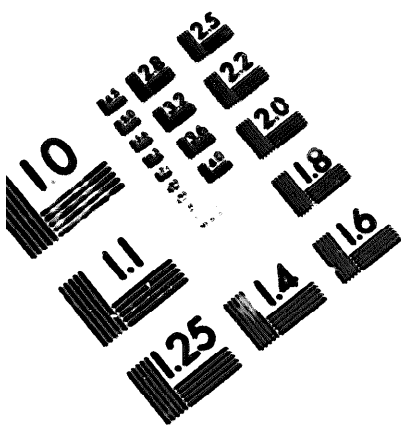






DEPARTMENT OF THE ARMY

MICROFORM  
TEST TARGET



150 MM

1.0 mm (e= 0.1 mm)

ABCDEFGHIJKLMN OPQRSTUVWXYZ 1234567890  
abcdefghijklmnopqrstuvwxyz %& / ' \* ~ : ; < > = + \* & @ \*

1.5 mm (e= 1.09 mm)

ABCDEFGHIJKLMN OPQRSTUVWXYZ 1234567890  
abcdefghijklmnopqrstuvwxyz %& / ' \* ~ : ; < > = + \* & @ \*

2.0 mm (e= 1.37 mm)

ABCDEFGHIJKLMN OPQRSTUVWXYZ  
abcdefghijklmnopqrstuvwxyz  
1234567890 \$ % & / ' \* ~ : ; < > = + \* & @ \*

2.5 mm (e= 1.77 mm)

ABCDEFGHIJKLMN OPQRSTUVWXYZ  
abcdefghijklmnopqrstuvwxyz  
1234567890 \$ % & / ' \* ~ : ; < > = + \* & @ \*

1.0 mm (e= 0.1 mm)

ABCDEFGHIJKLMN OPQRSTUVWXYZ 1234567890  
abcdefghijklmnopqrstuvwxyz %& / ' \* ~ : ; < > = + \* & @ \*

1.5 mm (e= 1.09 mm)

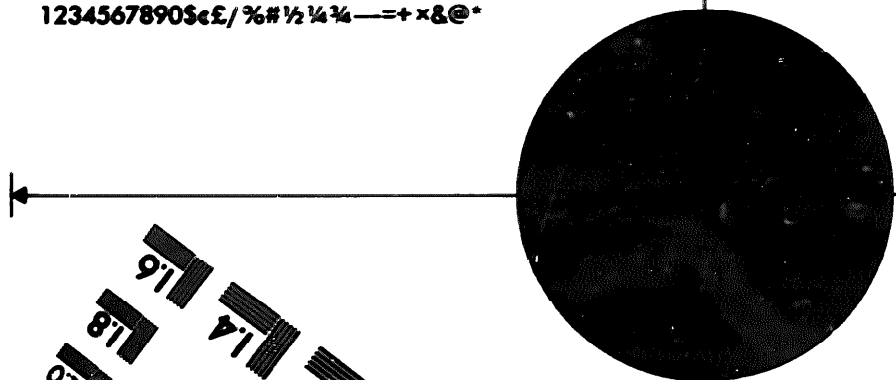
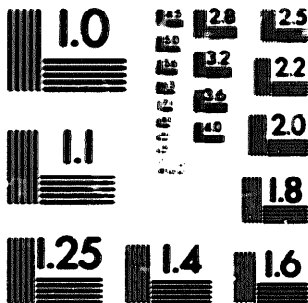
ABCDEFGHIJKLMN OPQRSTUVWXYZ 1234567890  
abcdefghijklmnopqrstuvwxyz %& / ' \* ~ : ; < > = + \* & @ \*

2.0 mm (e= 1.37 mm)

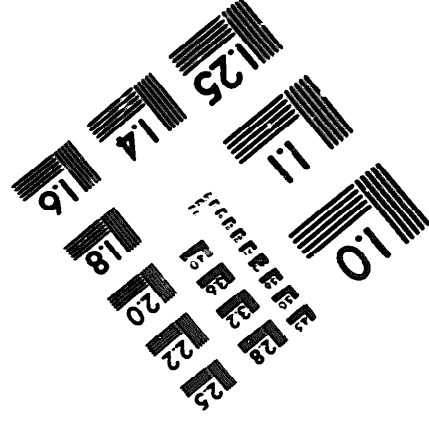
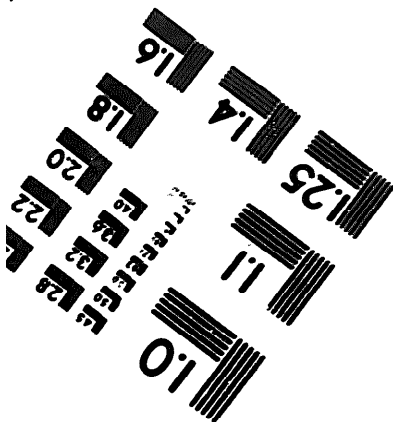
ABCDEFGHIJKLMN OPQRSTUVWXYZ  
abcdefghijklmnopqrstuvwxyz  
1234567890 \$ % & / ' \* ~ : ; < > = + \* & @ \*

2.5 mm (e= 1.77 mm)

ABCDEFGHIJKLMN OPQRSTUVWXYZ  
abcdefghijklmnopqrstuvwxyz  
1234567890 \$ % & / ' \* ~ : ; < > = + \* & @ \*



200 MM



250 MM